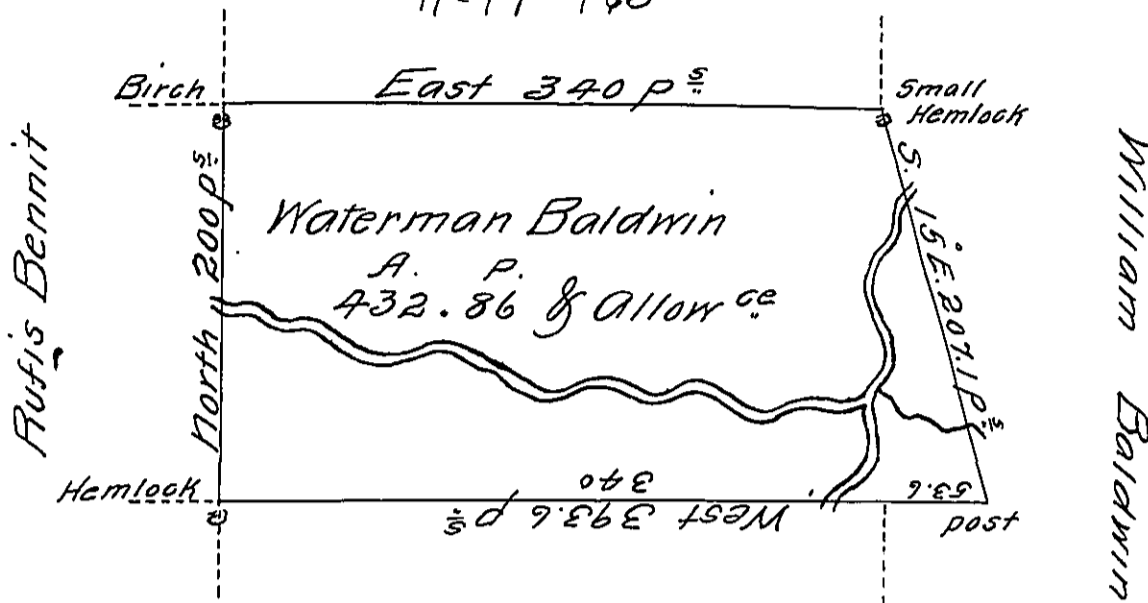


Isaac Baldwin

A-17-163



Wm Thomas

A Draught of a Tract of Land situate on the Waters of little Sugar Creek in the County of Luzerne, Containing Four hundred & thirty two Acres eighty six perches & Allow^{ce} of Six p̄ Ct for roads & c. Surveyed July 25th 1793 on a Warrant to Waterman Baldwin — dated the 13. August 1792 —

Jo. J. Wallis D.S.

To Daniel Brodhead Esq^r
Surveyor General

IN TESTIMONY that the above is a copy of the original remaining on file in the Department of Internal Affairs of Pennsylvania, made conformably to an Act of Assembly approved the 16th day of February, 1833, I have hereunto set my Hand and caused the Seal of said Department to be affixed at Harrisburg, this Thirteenth day of November 1911

Henry Howell
Secretary of Internal Affairs.